

# Q SWIMWEAR: PRODUCT INFORMATION

## GENERAL CARE FOR YOUR Q SUIT

Q suits are made with the industry leading polyester fabrics. Proper care and maintenance is recommended to ensure the durability and design of your suit. Below are some recommendations to increase the life of your Q product.

**1.Start with a Quality Product:** We do not offer a suit at a lower cost because we value the durability and wearability of our suits. Our products are made of a combination of polyester and PBT.

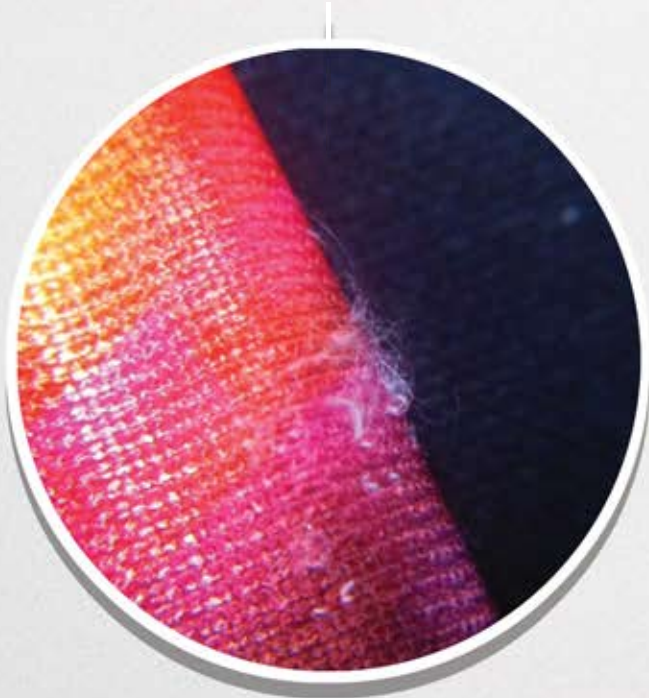
Two industry leading fabrics in chlorine resistance and wear.

**2.Be Careful where you sit:** Avoid constant contact with rough surfaces (Pool Deck, Blocks, Bleachers)

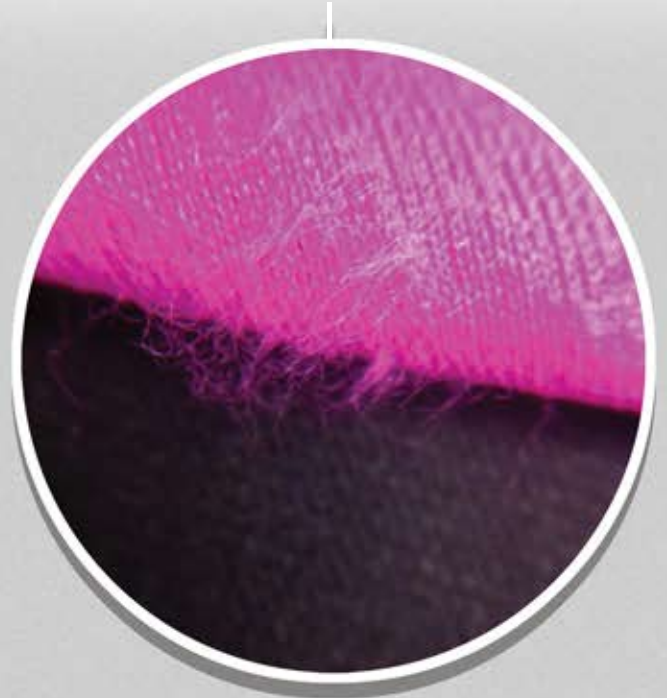
**3. Rinse your suit with cool water after use:** Avoid Machine washing and drying as it can effect the life of your Q product

**4. Avoid use in Suit Dryers** (suit mate)

**SUBLIMATED SUIT**



**SOLID SUIT**



**W  
A  
R  
N  
I  
N  
G**

The Above images show general wear and tear of a sublimated suit. In no way will this look effect the structure and durability of your Q product.

For more information please contact [sales@qswimwear.com](mailto:sales@qswimwear.com)